



October 1, 2009

Ms. Julie Bennett
Great Lakes Fishery Trust
600 W. St. Joseph, Suite 10
Lansing, MI 48933

Re: Agreement for grant number 2007.926

Dear Ms. Bennett:

I am pleased to report that we have completed engineering and design for the *Detroit River International Wildlife Refuge Gateway Fishing Access Facility* on time and on budget. We greatly appreciate the support of Great Lakes Fishery Trust in helping us develop what promises to be a world-class fishing facility.

More information on our work is included in the following attachments:

1. A narrative and supporting illustrations and drawings describing the project and excellent fishing opportunities it will provide.
2. A financial report showing how we used the grant funds.

As you will note in the report, we are committed to working with our partners to move to the next phase of this project and we are currently seeking funding to construct the facility.

Please contact me if you have questions or require additional information. I would be very happy to discuss the project with you.

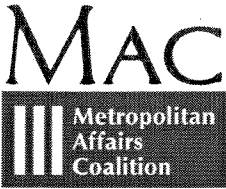
Again, thank you for Great Lakes Fishery Trust's support of our project.

Sincerely,

A handwritten signature in cursive script that reads "Susan Phillips".

Susan Phillips, CAE
Executive Vice President

Attachments



**Detroit River International Wildlife Refuge Gateway Fishing Access Facility
Great Lakes Fishery Trust Project #2007.926
Engineering and Design Grant Report**

Location

The fishing access facility will be located on the Detroit River International Wildlife Refuge (DRIWR) Gateway site in the City of Trenton, Michigan. The Gateway is the planned location for the Visitor Center and will be the entry and headquarters for the refuge. The DRIWR stretches 48 miles along the Detroit River and western shore of Lake Erie, from the mouth of the Rouge River in Detroit to the Ohio border. It contains over 5,600 acres of island, coastal wetland, shoal, and upland habitats. Owned by Wayne County, the DRIWR Gateway is less than one mile north of the Detroit River's mouth on Lake Erie. This 44-acre brownfield site lies south of the DTE Trenton Channel Power Plant and adjacent to Humbug Marsh, a 410-acre parcel owned by the US Fish and Wildlife Service (USFWS) and representing the last mile of undeveloped shoreline on the U.S. mainland of the Detroit River. The Gateway site will serve as the key attraction and entry into the only International Wildlife Refuge in North America.

Situated amidst urban and suburban populations of the Greater Detroit area, Toledo, and Windsor, this project provides exceptional fishing opportunities for approximately six million people residing within a 50-mile radius. Additionally, anglers requiring overnight accommodations may stay at one of the 78 Michigan motels, providing over 12,000 rooms that are located within a 20 mile radius of the site.

(Two renderings which illustrate the facility location and Detroit River International Wildlife Refuge Gateway Master Plan are attached.)

Description

The fishing access facility will provide accessible, shore-based fishing opportunities on the Detroit River, one of the most productive walleye fisheries in North America, holding the national record for a walleye caught in a Professional Walleye Trail Tournament (14.2 pounds). The project, open to the public and anglers of all skill levels, includes a 15' x 775' boardwalk with three sheltered areas, a 225' x 15' fishing pier, a 100' x 15' floating dock, restroom facilities, seating areas, interpretive signage and a 1000' long aggregate road for vehicular access.

The fishing pier, located at the end of the boardwalk, is planned to accommodate up to 100 anglers at once. The boardwalk leading to the pier will be wide enough to accommodate fishing along both rails (an additional 900 linear feet of fishing access). The fishing area accessible from the boardwalk includes shallower waters, rich with panfish, providing an opportunity for less experienced and young family fishing. Assuming a conservative number of 50 people

Detroit River International Wildlife Refuge Gateway Fishing Access Facility
Great Lakes Fishery Trust Project #2007.926
Engineering and Design Grant Report
Page 2

fishing per day and a six-month fishing season, the pier offers opportunity for at least 9,000 individual fishing trips per year.

The project will meet or exceed ADA requirements. A 42" high cable railing will be installed along the sloped (less than 5%) portions of the boardwalk; flat areas of the boardwalk will have a 32" high rail to accommodate children and anglers in wheelchairs. The pier includes a landing zone where the deck elevation slopes to near water level. Accessible by both steps and a ramp, the landing zone gets fishermen closer to the water to net their catch.

Access to the site is secured by a lockable gate. A restroom/storage facility is planned to be constructed immediately west of the entrance to the fishing pier. Potable water service, electrical access and data/cable connection will be provided to the restrooms and extended to the pier.

A compacted aggregate road will be constructed from the fishing pier boardwalk back to an existing concrete slab on site. A newly constructed entry drive will connect the concrete slab to Jefferson Avenue. The compacted aggregate road is widened for the majority of its length to include 90 degree parking along one side. A grass parking area maintained by the USFWS is currently on site and will be utilized for overflow parking in times of peak demand. (The attached plan C1.0 shows the layout of the proposed aggregate access drive and parking.)

Numerous individuals and organizations were consulted throughout the process of engineering and designing the fishing access facility. In addition to involving key stakeholders, a public meeting attended by nearly one hundred citizens was held in the City of Trenton. Suggestions and comments from the public were received and incorporated into the design. Regulatory agencies have also been involved in this project from its outset and have shown consistent support. Discussion began with representatives from the two primary permitting agencies, the Michigan Department of Environmental Quality and the U.S. Army Corps of Engineers during the conceptual design phase. Once design development was completed, plans were presented to the reviewing agencies again. Comments on the design development package were positive and recommendations were incorporated into the construction drawings prior to submitting for permits. A full set of construction drawings was completed and a joint permit application was recently submitted. Project partners are now seeking funding to construct the facility.

(Two renderings and two drawings illustrative of this work are attached.)

Fishing Opportunities

The proposed fishing access facility will provide a shore-based fishing experience in an area considered to be one of the premier fishing locations in the metropolitan Detroit region. The physical attributes of the adjacent Humbug Marsh, including water depth, substrate, current, near-shore shallow habitat, temperature and a near-by drop-off into Lake Erie combine to attract large numbers of fish. Surveys conducted by the MDNR consistently demonstrate large fish populations of diverse species where the fishing pier is proposed. In the September 1996 fishery

Detroit River International Wildlife Refuge Gateway Fishing Access Facility
Great Lakes Fishery Trust Project #2007.926
Engineering and Design Grant Report
Page 3

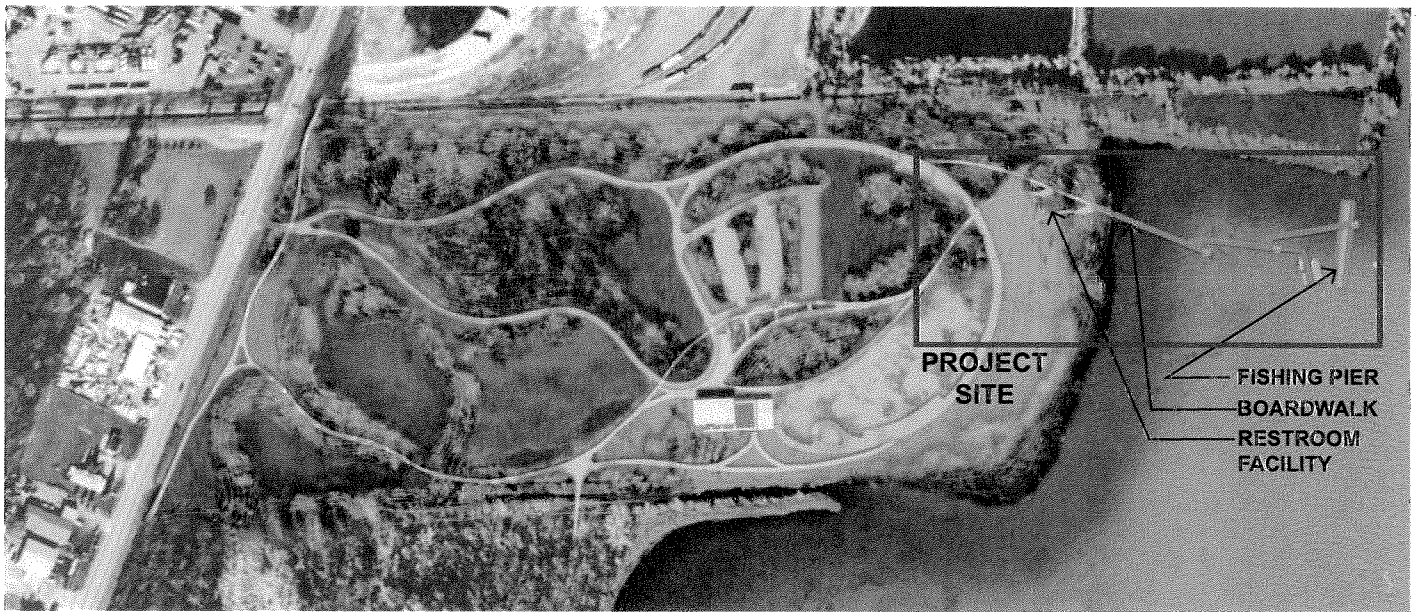
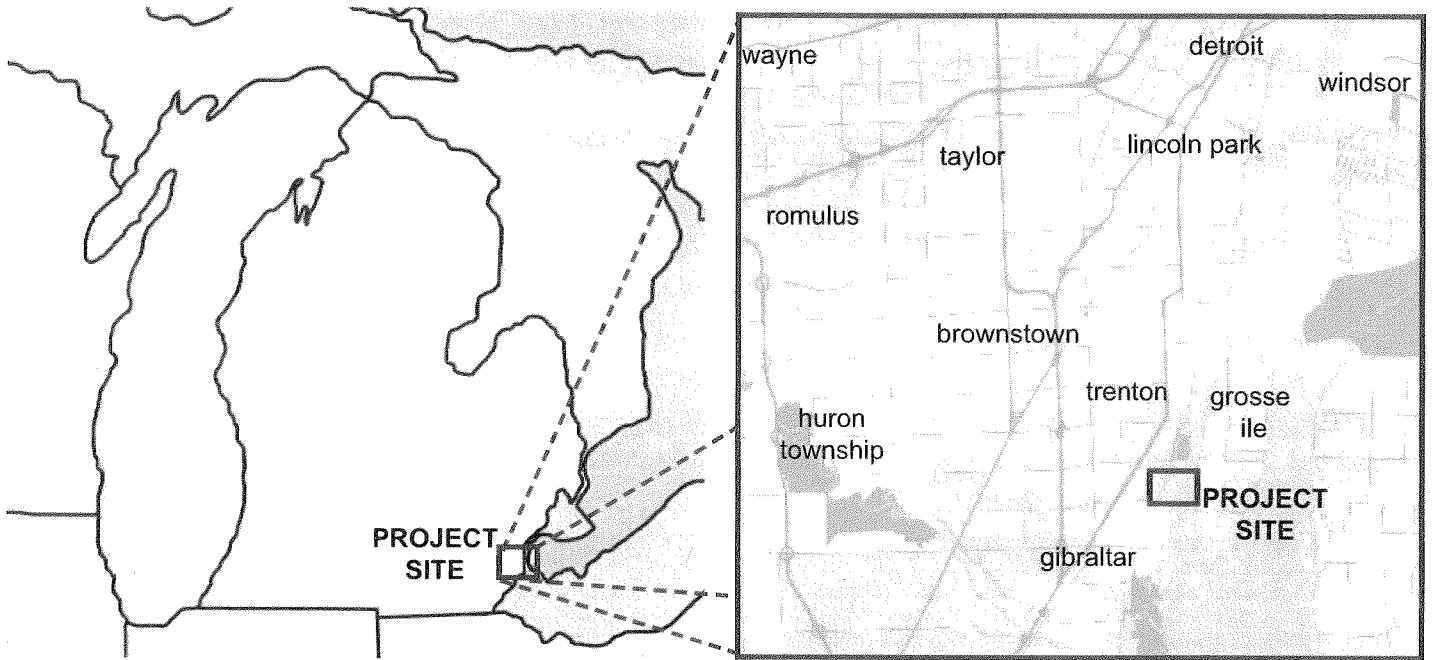
survey, 812 fish weighing approximately 1,356 pounds representing 24 species were collected. Species included pumpkinseed, sunfish, bluegills, yellow perch, largemouth bass, walleyes, common carp, quillback suckers, and white perch.

The variety of fish species present good spring through autumn fishing opportunities. For example, walleye fishing is outstanding in the spring and remains good through the summer and fall seasons. Fishing for smallmouth, largemouth, and white bass, as well as bluegill is very good in the summer. Yellow perch fishing is excellent spring through fall. Some of the species of fish are typically caught on the river with minnows, worms, and lures. Panfish are caught with bobbers. In this premier location, the fishing access facility is designed to provide a world-class fishing opportunity, offering an experience unhampered by line snagging rip-rap and limited barrier free access. Additionally, unique to the pier is its design elevation that will keep anglers close to the water.

Educational Opportunities

The boardwalk and fishing pier are planned to be important interpretive venues for the Detroit River International Wildlife Refuge. The facility will include fishery-related interpretive signage aligned with Great Lakes Fishery Trust and U.S. Fish and Wildlife Service goals. Visitors accessing the fishing pier and boardwalk will also have access to a state-of-the-art Visitors Center that will be specifically designed for place-based environmental education and natural resource interpretation.

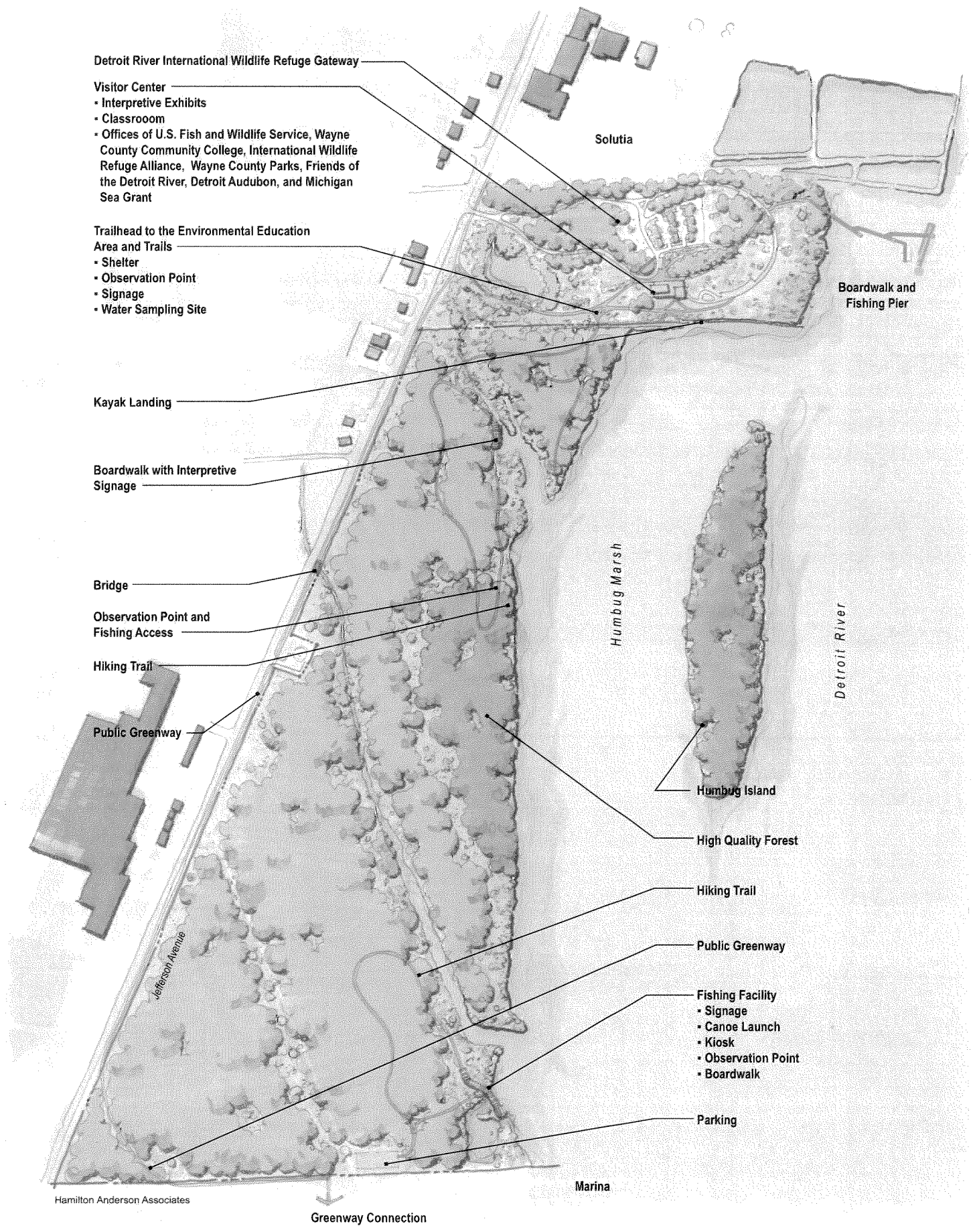
This project will be integral to educational programming being developed by many project partners. More specifically, Wayne County Community College plans to conduct fishing classes on the pier as part of their continuing education program. Michigan Sea Grant plans to use the pier as home base for its schoolship – a vessel-based education program on the lower Detroit River, offering shore-based and on-board classroom activities. The facility will also be a core component of the refuge's interpretive program, with a full-time park ranger who will lead interpretive activities on the site. This provides an excellent opportunity for promoting, and educating people about, fishing and the need to protect fish and their habitat. Educational programming geared toward children will also help develop the next generation of fishing enthusiasts and conservationists.



Detroit River International Wildlife Refuge Gateway - Master Plan



Aerial photograph - notice anglers boating near the project location



Humbug Marsh and Refuge Gateway Master Plan

hamiltonsonanderson

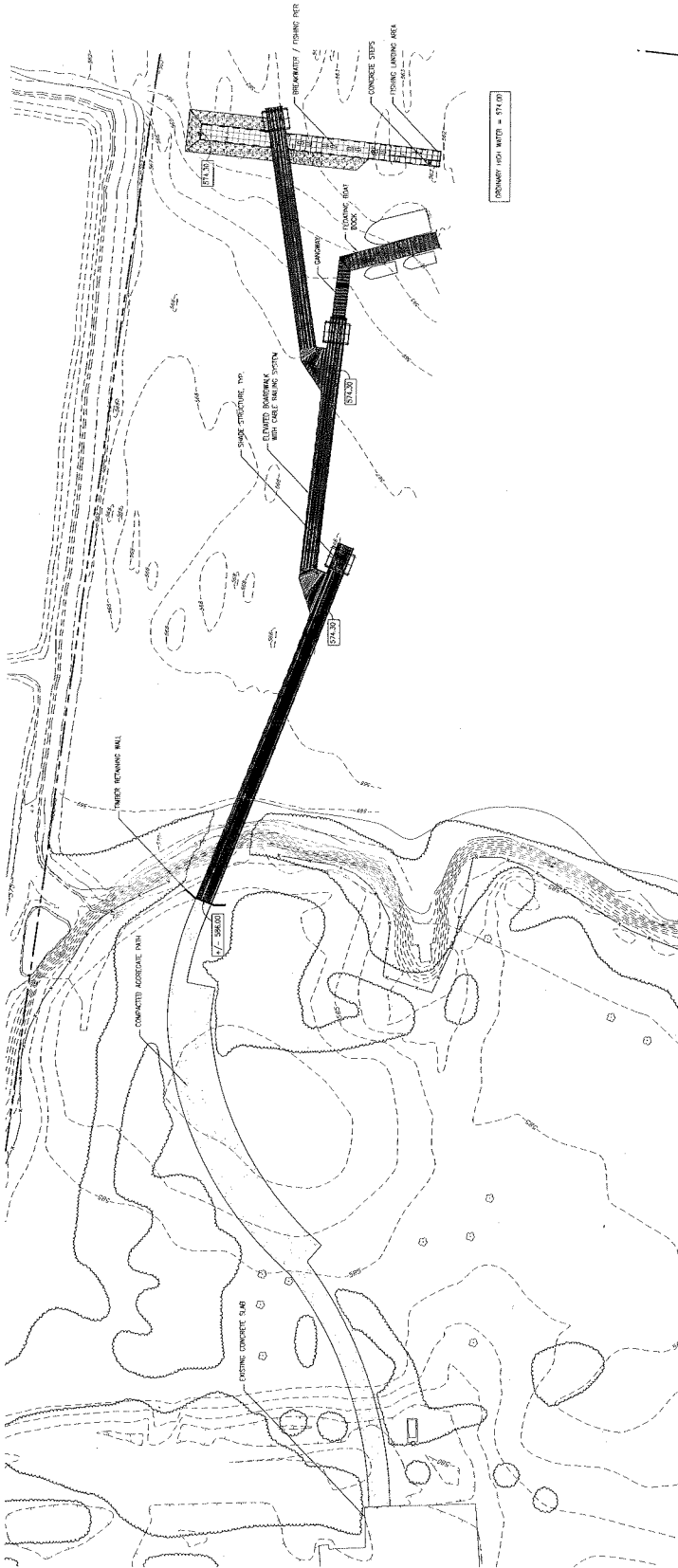
architecture landscape architecture
urban planning civil engineering
interior design graphic design

1435 Boulevard des Etoiles
Detroit, Michigan 48226
p 313 964 0770 f 313 964 0170
www.hamiltonsonanderson.com

Principal Engineer
Cynthia Burt
1145 University
Ann Arbor, MI 48106
734 763 2886
734 763 2887
SVP, Senior and Environmental
CIVIL ENGINEER INC.
One Riverfront Plaza, 15th
Detroit, Michigan 48226
313 964 0770
L.A.A. Inc.
10000 Woodward Ave., Suite 500
Ann Arbor, MI 48106
734 763 1518

Client
**Metropolitan Affairs
Coalition**
335 Griswold Street, St. 300
Detroit, MI, 48226

Key Plan



DATE	
REVISION	
DESCRIPTION	
DESIGNED BY	
CHECKED BY	
DATE	

Client
**DRWR
Fishing Pier and
Boat Dock**
Owner
**General Development
Plan**

Project Number: 100010
Drawing No. 1
Approval No. X
Scale: SCALE: 1" = 50'-0"
0' 50' 100' 150'
Drawing No.

C1.0



Know what's below.
Call before you dig.

